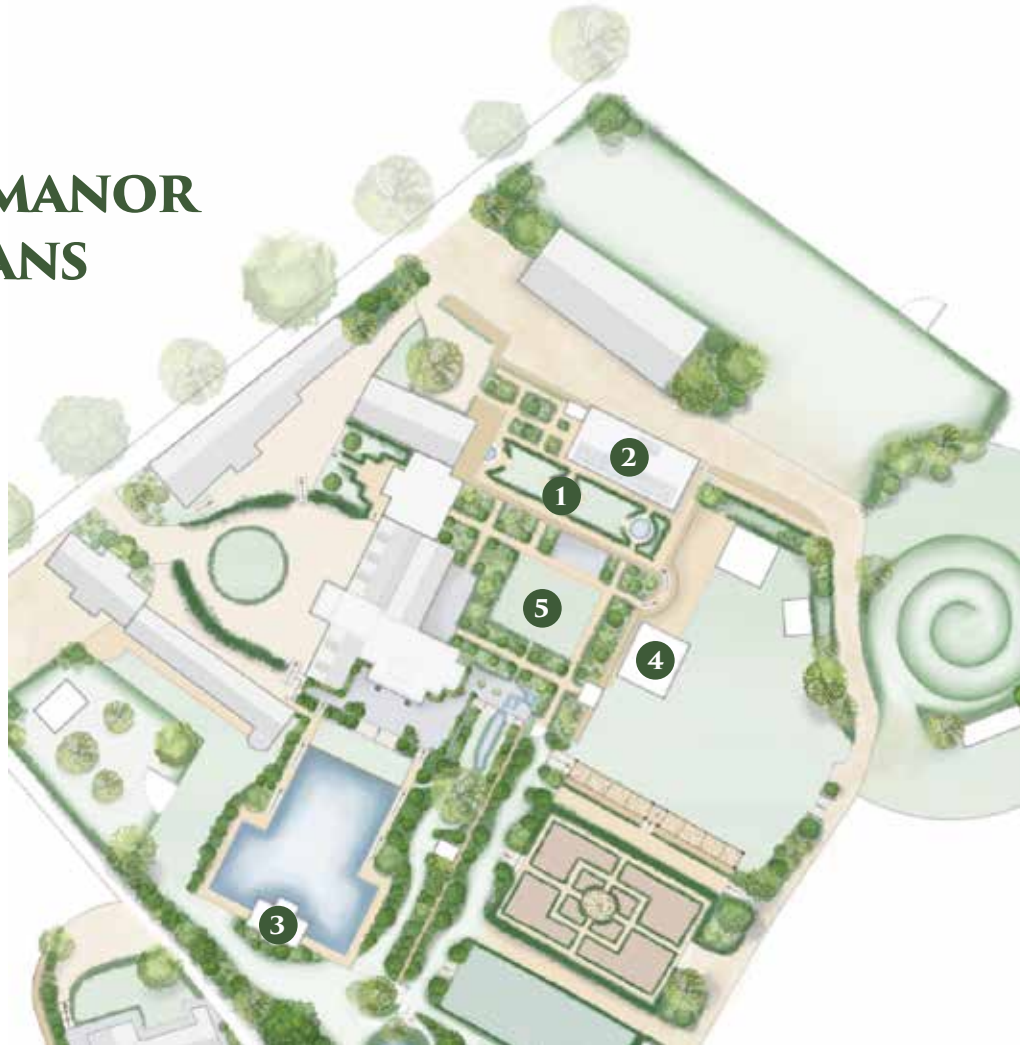


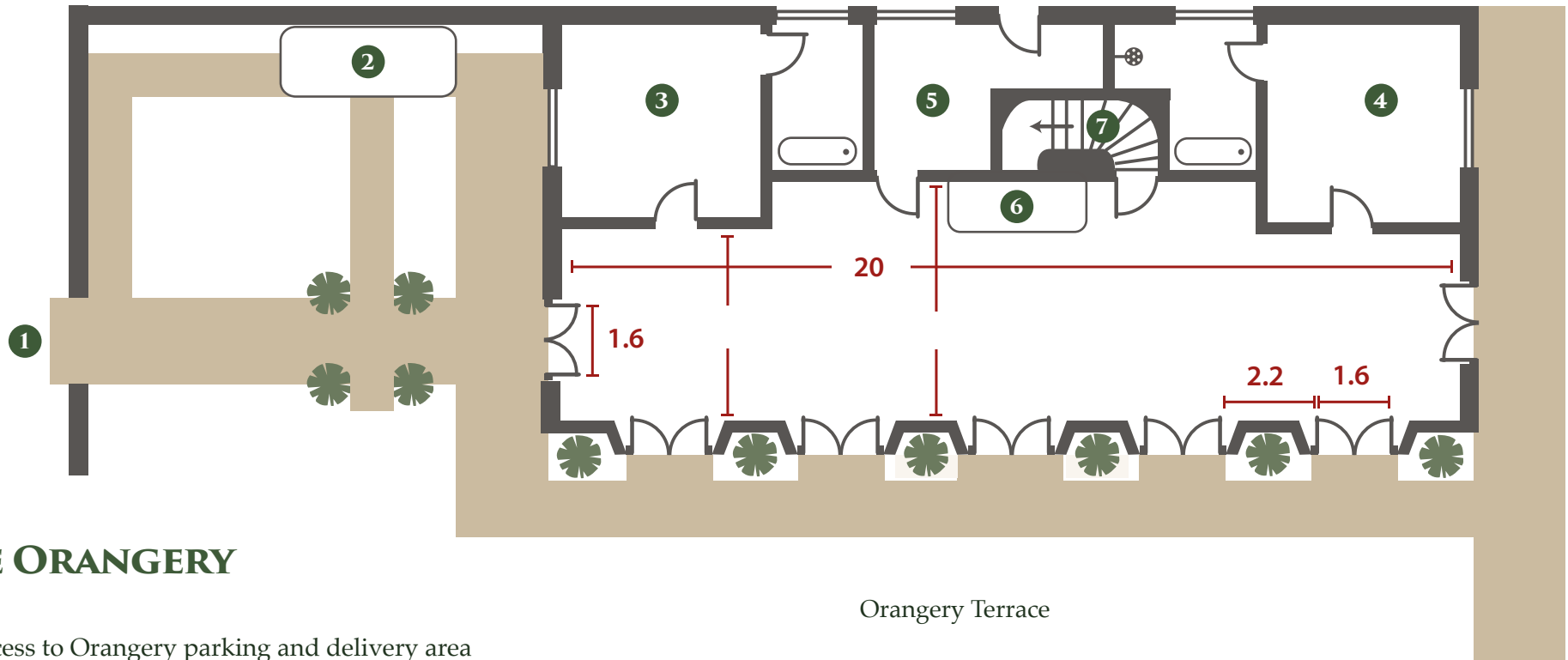




EURIDGE MANOR FLOOR PLANS

- 1 Ballroom
- 2 Orangery
- 3 Boathouse
- 4 Petal Marquee
- 5 Rose Garden





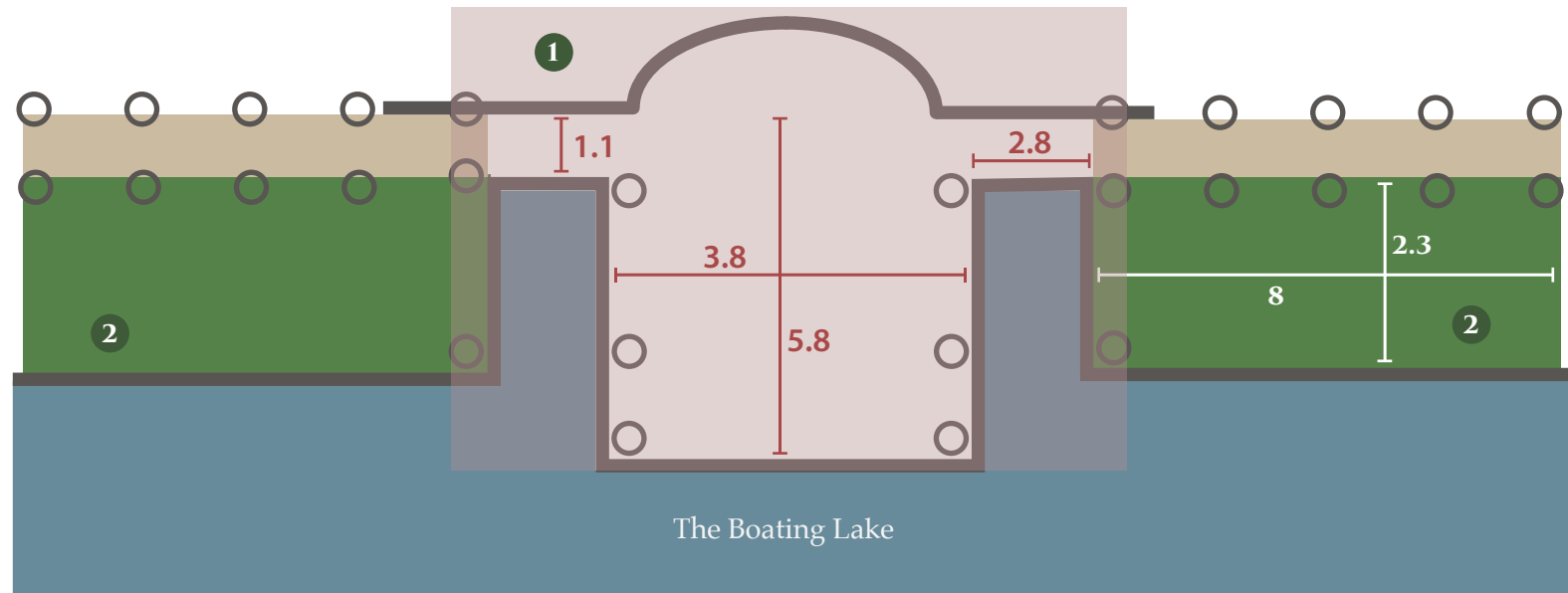
THE ORANGERY

- 1 Access to Orangery parking and delivery area
- 2 Sauna
- 3 Sunset Bedroom with en-suite bath
- 4 Sunrise Bedroom with en-suite bath and shower
- 5 Kitchen
- 6 Fountain
- 7 Stairs down to the Ballroom

DRAWING NOT TO SCALE
All dimensions are in Meters

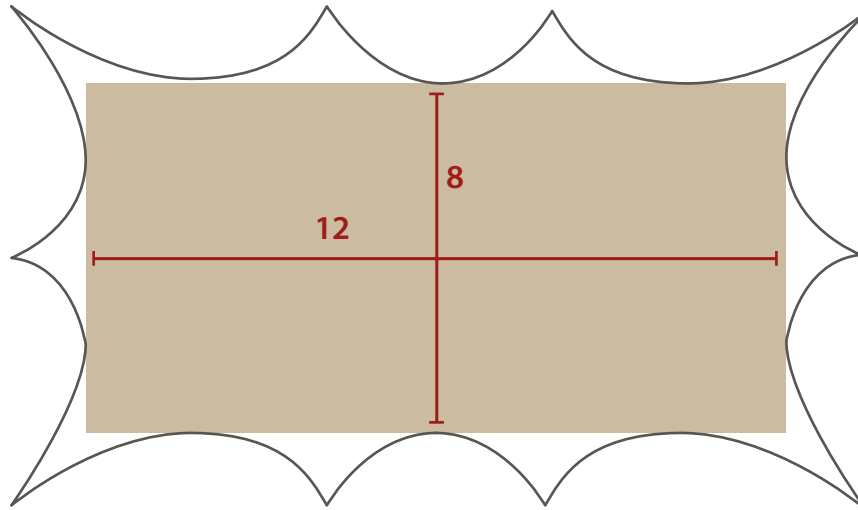
| THE BOATHOUSE

- 1 Showing covered area
- 2 Grass area allows seating for 43 people on either side, this area is not covered.



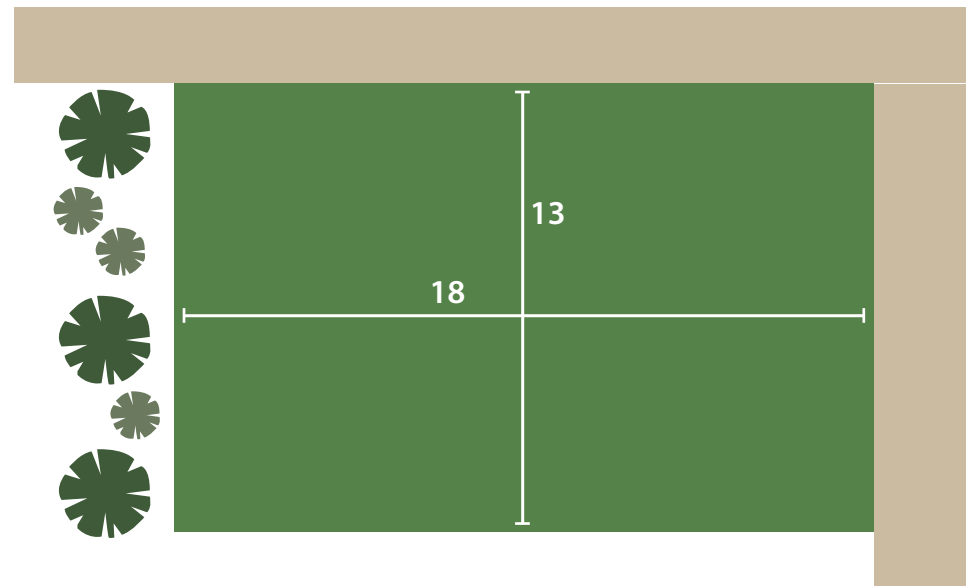
DRAWING NOT TO SCALE
All dimensions are in Meters

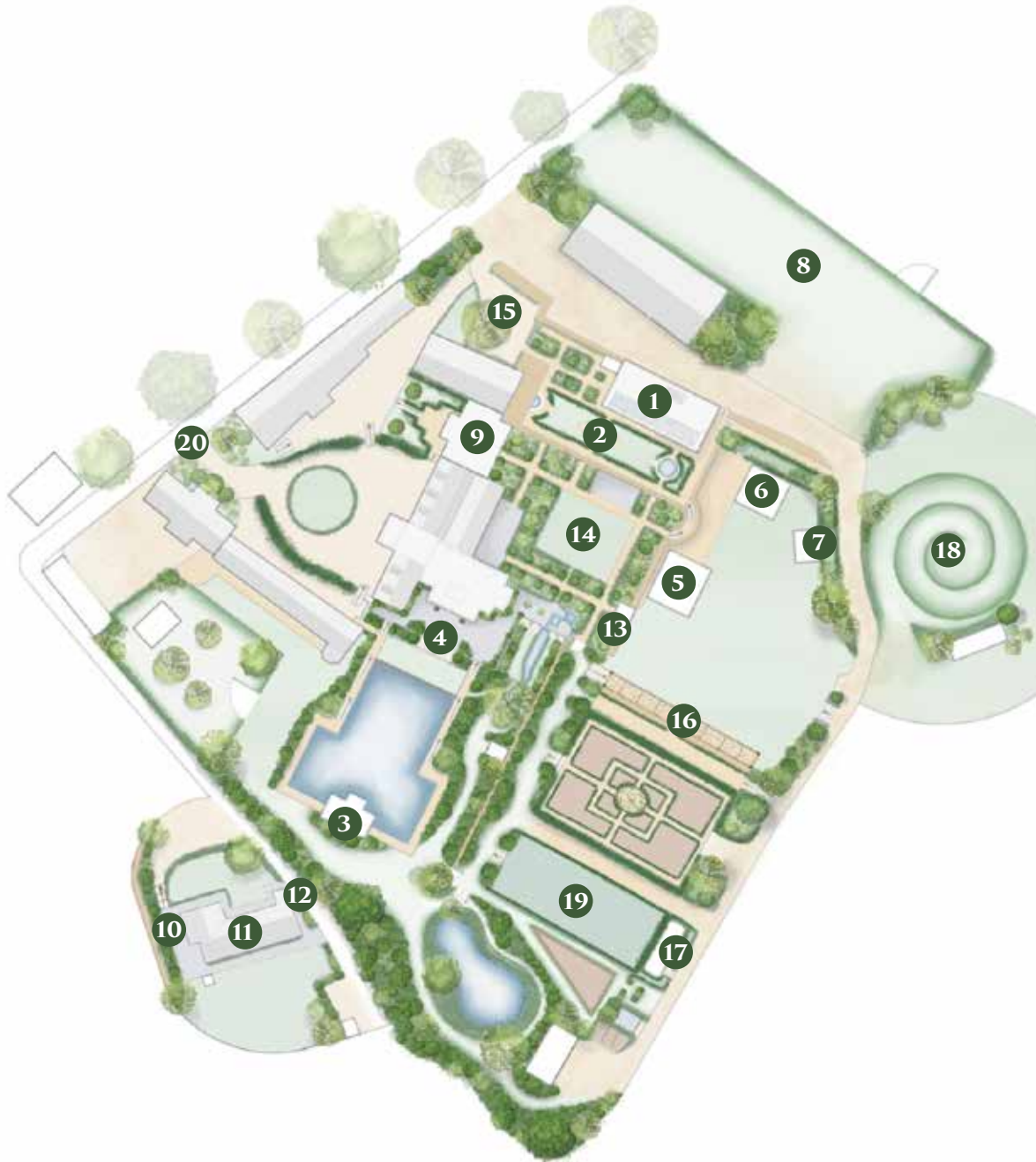
| THE PETAL MARQUEE



DRAWING NOT TO SCALE
All dimensions are in Meters

| THE ROSE GARDEN





| THE ESTATE

- | | | | |
|----|--------------------------|----|---------------------------|
| 1 | The Orangery | 11 | Bluebell Cottage |
| 2 | The Orangery Terrace | 12 | Ivy Cottage |
| 3 | Boathouse | 13 | Arch with Chandelier |
| 4 | Boathouse Terrace | 14 | Rose Lawn |
| 5 | Petal Marquee | 15 | The Orangery Carpark |
| 6 | Catering Tent | 16 | Rose Pergola |
| 7 | Guest Toilets | 17 | Christie's Cabin |
| 8 | Guest & Supplier Parking | 18 | The Tump and viewing area |
| 9 | Cloister Rooms | 19 | Tennis Court |
| 10 | Peartree Cottage | 20 | Main entrance |